

THE HYBRID

THE SUPERIOR SHOOTING EXPERIENCE



A BLEND OF WORLD CLASS FEATURES INTO THE ULTIMATE
VERSATILE, PRACTICAL & PRECISE SHOOTING PLATFORM.



FREEDOM

Multi-caliber, user interchangeability, giving you the same stock to handle, the same optic to look through and the same action to operate.

No matter what caliber you're choosing or what field you're in, The HYBRID will help you dominate.



ADVANTAGE

The ultimate in high-tech material selection and rifle design gives The HYBRID a technological advantage so you can carry it further, adapt it to any situation and make that shot when it counts.

COMPETE AT THE HIGHEST LEVEL

ASSURANCE

Military-grade technology, proven to enhance reliability, is scaled down for use in each HYBRID action. This guarantees performance and flawless operation each time, every time, no compromise.



UNITING YOU, WHO DEMAND THE BEST,
WITH THE APEX OF REVOLUTIONARY EQUIPMENT



CARRY ONLY WHAT YOU NEED

The HYBRID has been designed from the ground up with the most technically advanced features and materials available. As a result, the rifle can be configured in a way that best suits your application and with very little time and effort. With The HYBRID you will always be prepared to get out into the great outdoors to do what you love.

Take the advantage - own the results.

Take the advantage - own the results.

THE CONTROL IS YOURS

The HYBRID is the apex of user friendly versatility - it gives you the freedom to do what you want, when you want. Change calibers in a matter of minutes. Change from the trophy hunter to the predator hunter. Go from training to competing.

The versatility is yours.

Complete control.

TRUST IS EVERYTHING

Know that with The HYBRID, you can make the shot when it counts. This is the one rifle that can do it all and to the highest possible standards. No corners have been cut when designing and producing this rifle meaning when it comes to reliability, versatility and performance there is "No Compromise."

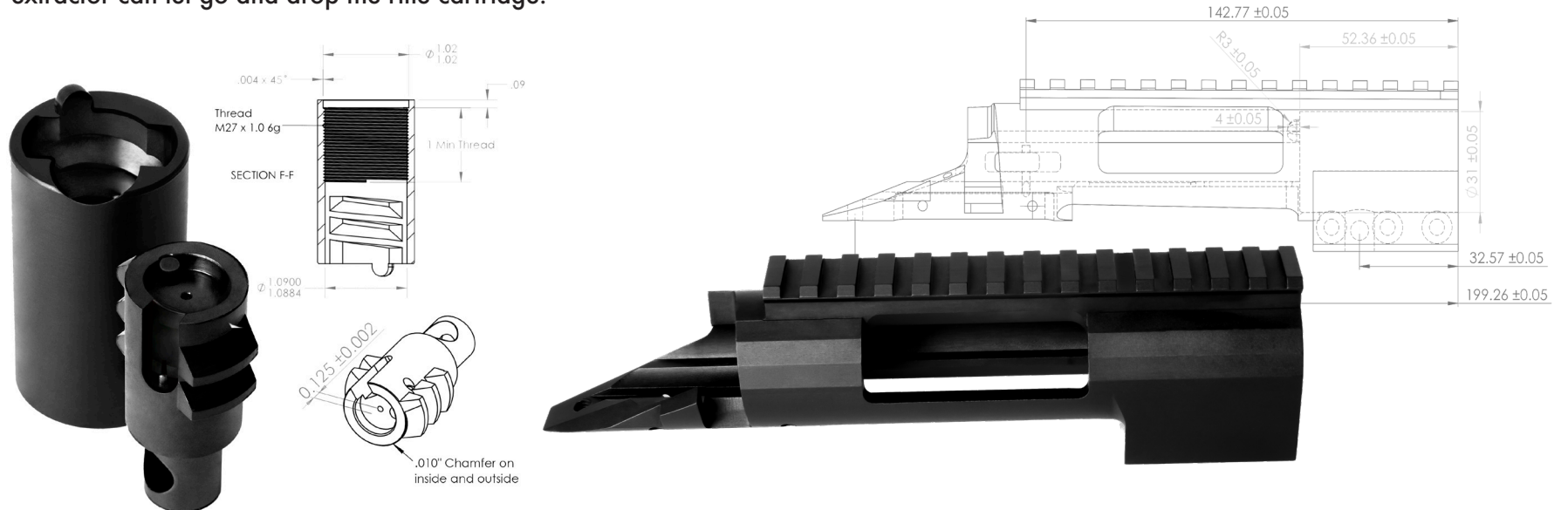




ADVANCED PRIMARY EXTRACTION

Primary extraction is an extremely underdeveloped but crucial stage of cycling your firearm. Primary extraction is one of the major causes of rifle malfunctions yet the design has not changed significantly in a century. In a conventional bolt action rifle, the primary extraction is conducted in approximately the last 5 degrees of bolt lift. This creates considerable shock loading on your extractor and brass to the point where the extractor can let go and drop the rifle cartridge.

The HYBRID uses an advanced primary extraction system wherein primary extraction is achieved throughout the entire 90 degrees of bolt lift. This spreads the load over a range 18x greater than conventional design in turn reducing the stress on the fired brass and your extractor while increasing reliability.





Integral picatinny rail & recoil lug -
Less parts, less problems

Advanced primary extraction system
for unparalleled reliability

MULTI CALIBER CAPABLE

One of the most amazing features of The HYBRID is that it is completely modular while extremely user friendly. The barrels are easily removed and replaced - this is done with simple tools and without the requirement to check head space with gauges. The bolt heads are easily swapped out, again with basic tools that are provided. This gives you, the end user, the ability to use one rifle for all applications. You can choose to set the rifle up specifically for PRS with a heavy steel barrel and then do a complete caliber change that afternoon with a carbon wrapped barrel for hunting the hills all in a matter of minutes and in the field or at home.

Optimized material selection for optimized results



Carbon fiber stock - the ultimate lightweight and rigid shooting platform

LIGHTWEIGHT OPTIMIZED DESIGN

The HYBRID is not only a blend of features but also of materials. We are able to optimize the weight of each component based on it's application with materials such as:

- 4140 alloy steel
- H13 Hot work die metal
- Chrome silicon
- 7075 T6 aluminum
- Carbon fiber composites

This has given us the ability to optimize each portion of the action and as a result, we are able to construct the heart of your rifle considerably lighter, stronger, and with far greater optimized features.

WEIGHT

24" carbon wrapped barrel - 6.7lbs
24" stainless steel barrel - 9.6lbs
Includes bolt & magazine, excludes optic & bipod

TRIGGER

User adjustable from 1-3.5lbs

CALIBER RANGE

A large range from .223 Rem to .338
Lapua



Carbon Fibre or stainless steel barrel options - each with match winning accuracy

Fully tunable directional muzzle brake to get the most out of tuning your load

Picatinny bipod mount providing the strongest & most rigid mounting option

Flush cup sling mounts. Even your sling has options!

YOU MAKE THE SHOT. IT'S OUR JOB TO MAKE IT COUNT



BARRELS

A combination of the finest materials & engineering expertise. Significant research, testing and evaluation has produced match grade barrels of world class quality. Hardy barrels are manufactured for the global market with stringent processes to meet and exceed SAAMI and CIP exacting standards. Discerning hunters and competition shooters are achieving results that can only be expected from the finest in world class barrel craftsmanship. All barrels are:

- CNC gun drilled for ultimate precision
- Spill bore reamed for extreme consistency
- Precision rifled for the utmost control
- Lead lap finished for that match winning detail

THE PERFECT INTERFACE BETWEEN MAN AND MACHINE



CARBON FIBER STOCK

New Zealand is at the forefront of carbon fiber innovation. The HYBRID utilizes this proven technology to bring you a stock that epitomizes our vision of bringing you the apex of revolutionary equipment. Made from moulded carbon fiber so there is no compromise in strength & integrity. We also assure an ergonomic, lightweight and rigid stock that performs flawlessly on recoil no matter the caliber, no matter the application.

CONSISTENT RETURN TO ZERO

The HYBRID will consistently return to zero after a barrel has been removed or installed into the action. This means the rifle can be stored broken down in the supplied compact robust carry case. The hard case is also considerably smaller than conventional hard rifle cases meaning it travels a lot better in the truck, on the ATV and in the plane.

NEXT LEVEL ADJUSTABILITY



The all new Hybrid Cheek Riser is perfect for the discerning marksman who needs that little something extra in their shooting life!

It allows you to set up the rifle to suit your shooting, not changing your shooting to suit the rifle.



ROOM FOR TWO

The barrel compartment within the case conveniently holds two barrels, separated by a foam wedge for stability. Ideal for both the carbon wrapped barrel or stainless steel barrel. Switch out anytime, anywhere. complete your kit. Switch out at any time, anywhere.



**optional accessories in some markets*

***can be exchanged for suppressor in some markets*

**spare bolt head for caliber change*



TUNEABLE DIRECTIONAL MUZZLE BRAKE

The fully tunable directional muzzle brake is produced from 400 grade stainless steel. The Hardy muzzle brake is a world leader in recoil reduction and muzzle control. Then we take it to the next level by giving you the opportunity to tune the muzzle brake position to best suit your load. Simple in concept, exacting in design & optimal in performance.



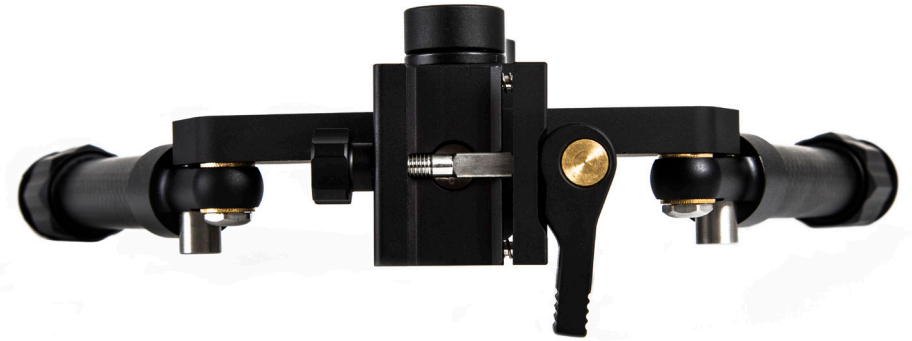


BIPOD

Comprehensive studies have highlighted the benefits surrounding the “triangle of stability” when applied to bipods within the shooting industry. This data has led to a number of new bipods on the market with wider stances, ensuring that your barrel sits inside the triangle created when fitting a bipod, rather than on the peak. The increased rigidity and stability of this style of bipod makes for a considerable advantage when making the long shots really count.

This being said, none do it better than the HYBRID BIPOD designed by Hardy Rifle. The HYBRID BIPOD takes full advantage of the “triangle of stability” and maximises the performance with features such as:

- Carbon fiber legs for additional rigidity
- Picatinny mounting to handle heavier recoil and pre-load
- Large ball joint locking mechanism for versatility and stability
- A mixture of brass and stainless-steel fittings for the ultimate in durability
- Increased cant for flexibility no matter what the terrain.





THE MAKER

Hardy Rifle is 100% veteran owned. The company was founded in early 2006 by Dan Hardy during his military career in the NZ Army as an Armourer / Weapons Engineer. In December of 2007 Dan left the army to concentrate fully on Hardy Rifle.

In the years following Hardy Rifle has gone from strength to strength, developing and producing world class rifles, suppressors, match grade barrels and muzzle brakes. The company has since expanded into a large team of exceptional personnel with various backgrounds, qualifications & skill sets.

In 2022 Hardy Rifle acquired the carbon fiber stock manufacturing business Kroseg Precision (formerly known as Hi Tec Composites) - bringing a new standard of premium carbon fibre stocks to the world and further enhancing New Zealand's reputation of being a world-class manufacturer in the firearms industry.

Hardy Rifle prides itself in operating by the company's core values:

LEAD FROM THE FRONT: RELENTLESS INNOVATION
& A COMMITMENT TO SERVICE & QUALITY

www.hardyriple.com

DEALERS



UNITED KINGDOM



stevek@highlandoutdoors.co.uk
www.highlandoutdoors.co.uk

AUSTRALIA



billy@osaaustralia.com.au
www.osaaustralia.com.au

USA



cpeters@legacysports.com
www.legacysports.com

ALL OTHER COUNTRIES



int@hardyrifle.co.nz
www.hardyrifle.com